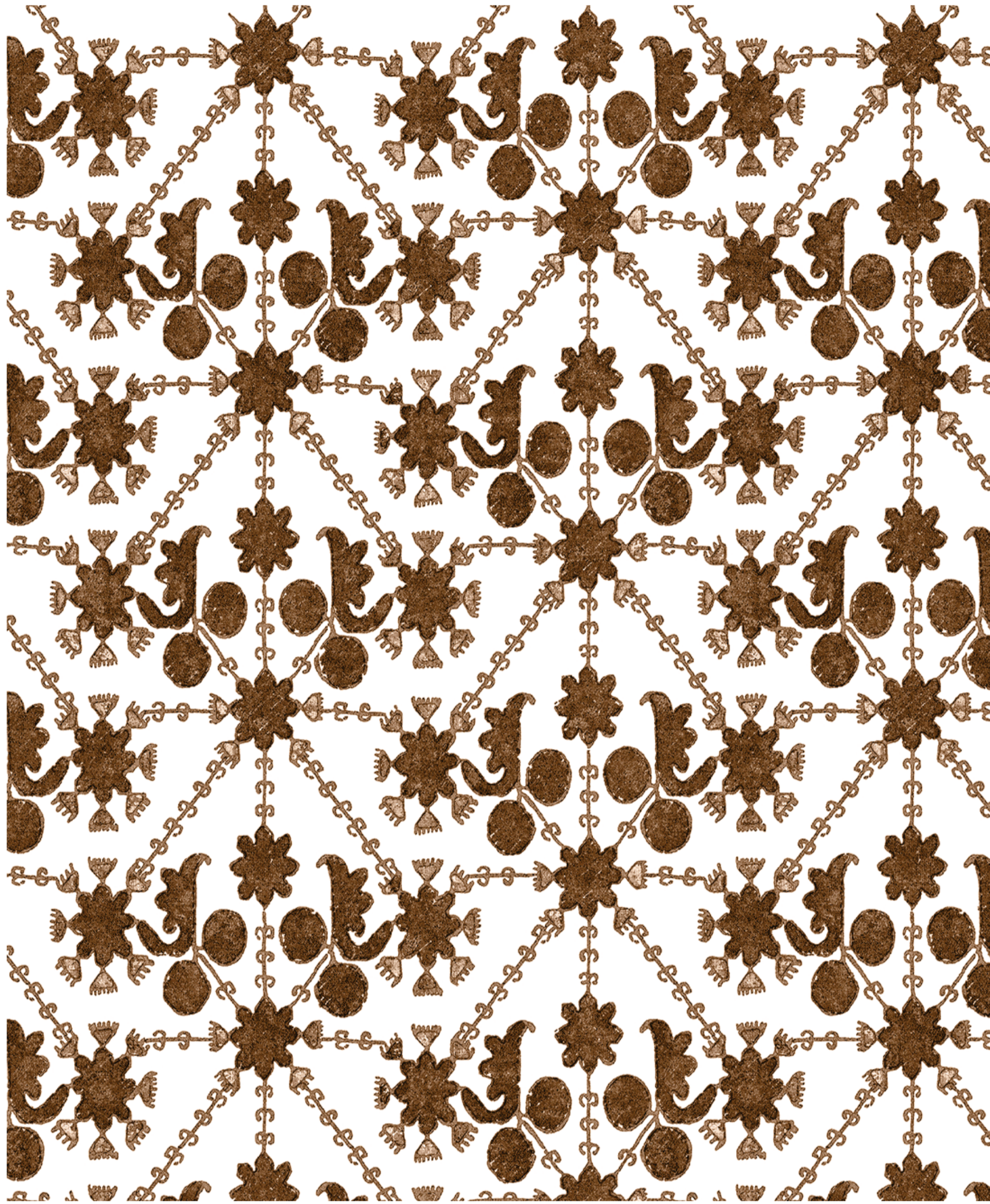


# KATIE LEEDE & COMPANY



## KOTA

Our KLC Kota fabric is finally being produced in wallpaper form! We couldn't be more thrilled to add this to our collection and can't wait to see these patterns blossom on the walls of your next project.

Kota derives its inspiration from an antique, embroidered bedcover that Katie unearthed while digging through piles of textiles in a little shop in Delhi.

Re-imagined as a bold, overall design and printed as a grasscloth, kota is fresh and lively pattern. Kota is available in two colorways: Kiwi and Himalayan Blues.

---

Grasscloth Wallpaper

34" Wide

34.39" Vertical Repeat

34" Horizontal Repeat

5 Roll Minimum

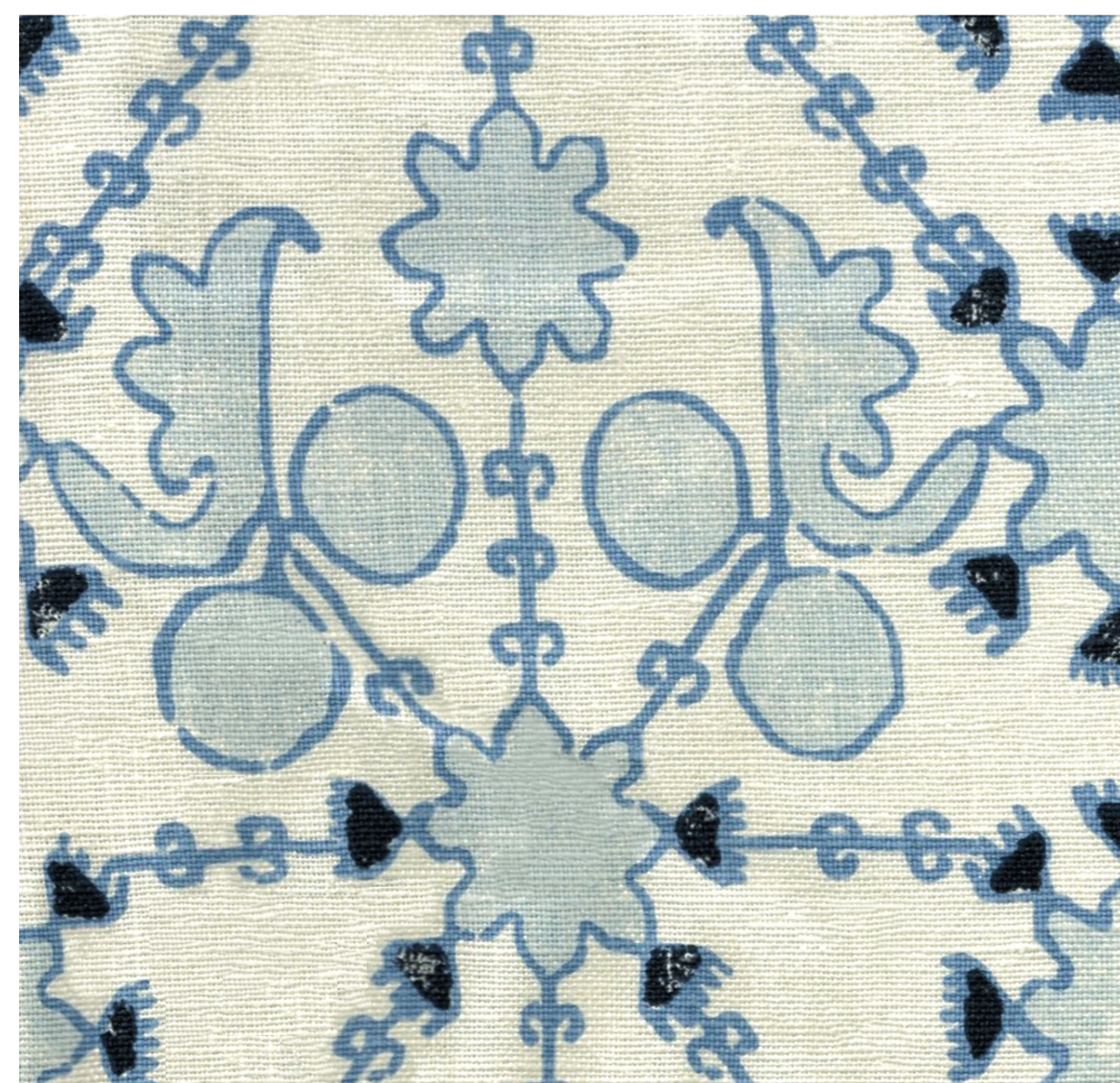
Shipped in Double Rolls (10 yards)

Paper is wipeable not scrubbable

---



KL-W-KTA-03 Kiwi



KL-W-KTA-04 Himalayan Blues