

# KATIE LEEDE & COMPANY



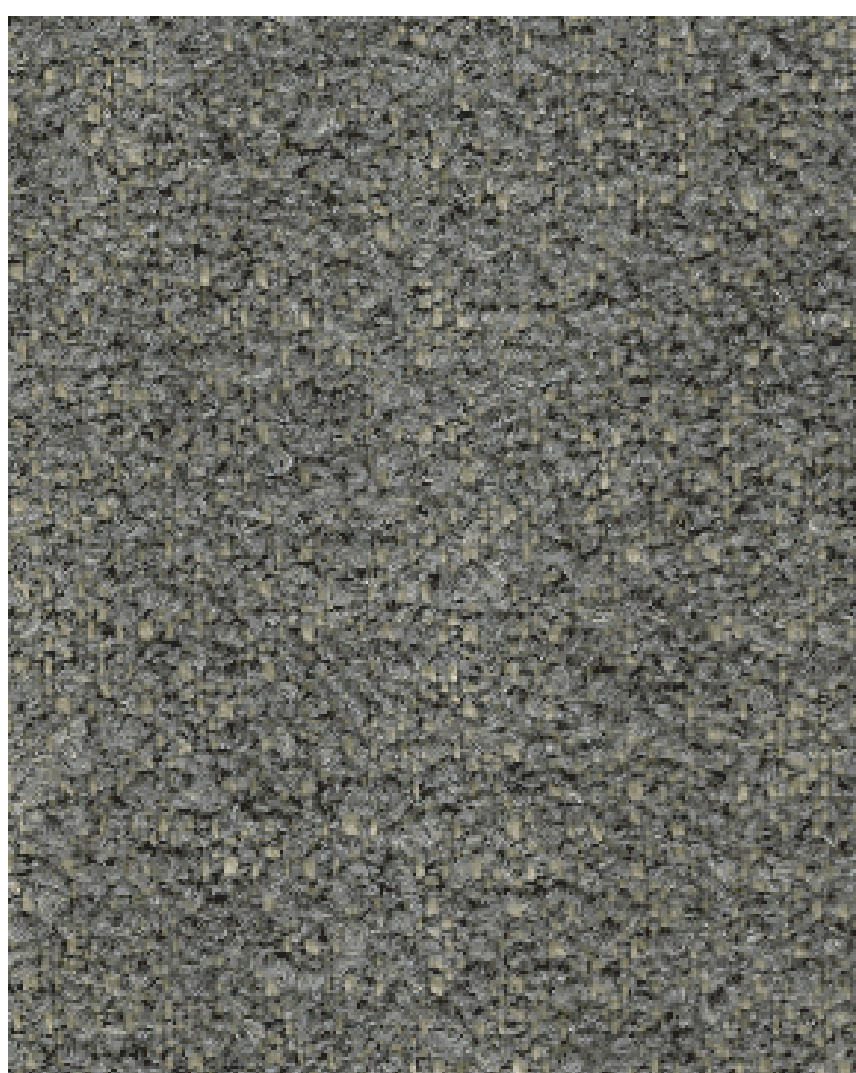
## BUSTY BOUCLE

Busty Boucle, constructed of curled wool and Belgian linen, begs to be used on curvilinear, sculptural upholstery or for soft goods like cloud-like, fluffy pillows. Elegant and evocative of mid-century French chic, the easy confidence of this fabric makes it a timeless choice for relaxed, sophisticated interiors. Available backed for an additional fee. And available in 3 handsome colorways: Seal, Hawks Feather and Stewed Tomatoes.

56% LI, 36% WO, 8% PES

Width 52"

Repeat: N/A



BB-01 Seal



BB-02 Hawks Feather



BB-03 Stewed Tomatoes