

KATIE LEEDE & COMPANY



CLOUD SCROLL NEGATIVE

While sifting through a stack of auction catalogs, Katie's keen eye was enticed by one lot showcasing an 18th century Indonesian Batik cloth, the pattern of which depicted stylized waves with a particularly captivating tribal border. Interestingly, the original cloth would have hung as a banner during festivals or been used by warriors to wrap their helmets in. Katie immediately seized on the idea that the border would look incredible if scaled to 12.5" wide, the exact dimension required to apply it as a striking waterfall skirt on chairs and upholstery. Katie also loves using the border as a bold point of interest on pillows. **Cloud Scroll** is printed in Switzerland on 100% Belgian linen and is available in the following gorgeous colourways: Indigo, Mahogany, Allspice, Edamame, Storm, Cayenne, Fjord, Citrine and Chard.

100% Linen

Width 59"

Repeat: 57" H x 10.1" V



CSN-01 Indigo



CSN-02 Mahogany



CSN-03 Allspice



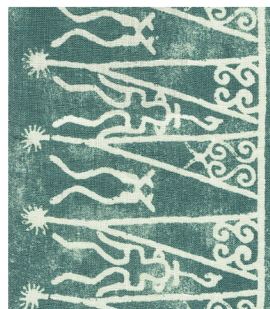
CSN-04 Edamame



CSN-05 Storm



CSN-06 Cayenne



CSN-07 Fjord



CSN-08 Citrine



CSN-09 Chard

Contact us at hello@katieleede.com to inquire about our custom capabilities for this design.

121 WEST 27TH STREET 703 NEW YORK CITY 10001 646-707-3569 www.katieleede.com