

KATIE LEEDE & COMPANY

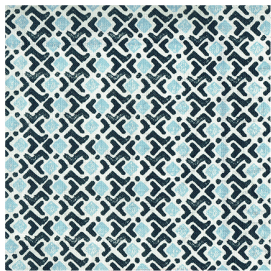


BUNDI

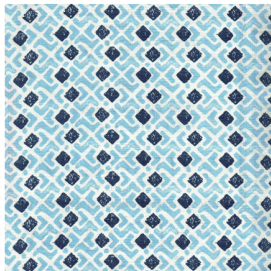
Bundi derives its small, geometric design from a silk-screened pattern Katie spotted on a piece of velvet while shopping in Jaipur. Now printed on a linen/poly blend for added durability, Bundi is available in a wide range of easy-to-use colors, making it a go-to choice for every project no matter the scheme.

Bundi is available in nine colorways: Marina, Heron, Steel, Monsoon, Shadow, Malted, Frog's Belly, Crocus and Guava.

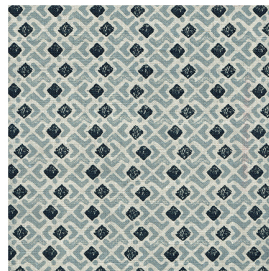
Martindale: 45,000
88% Linen 12% Polyamide
Width 56" - 51.5" (usable width)
Repeat: 5.2" H x 6.4" V



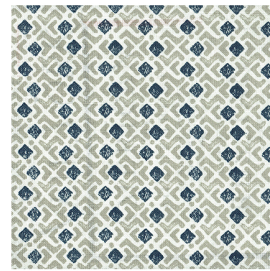
BD-01 Marina



BD-02 Heron



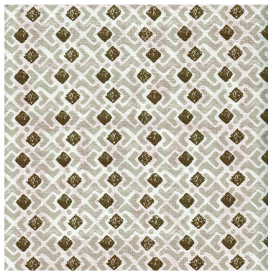
BD-03 Steel



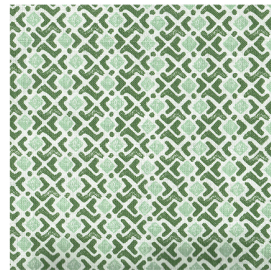
BD-04 Monsoon



BD-05 Shadow



BD-06 Malted



BD-07 Frog's Belly



BD-08 Crocus



BD-09 Guava

Contact hello@katieleede.com to inquire about our custom capabilities for this design.
121 WEST 27TH STREET #703 NY NY 10001 646-707-3569 www.katieleede.com