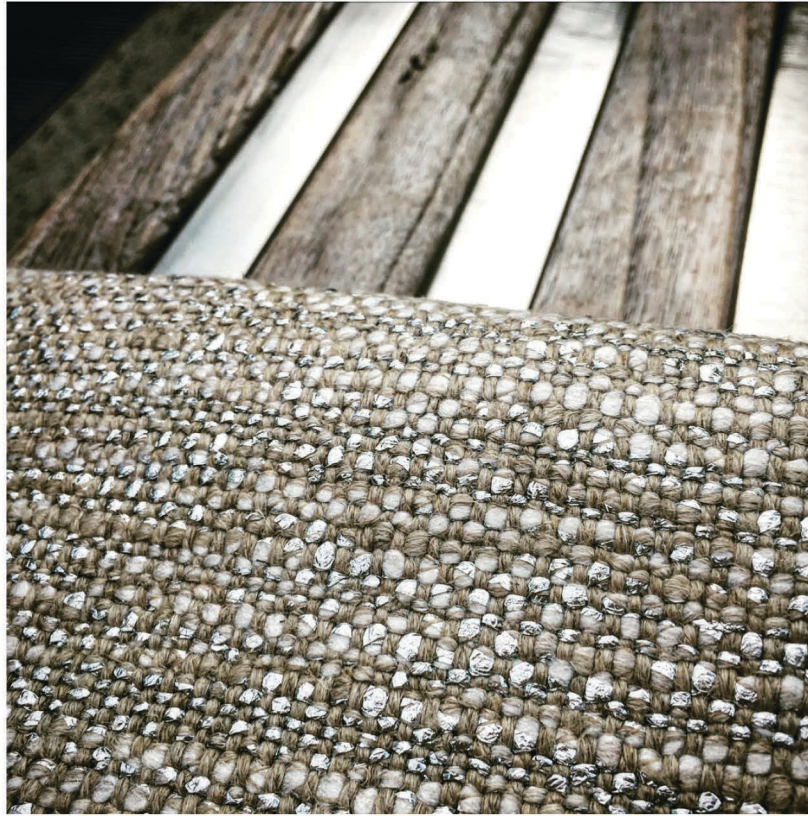


KATIE LEEDE & COMPANY



SHIMMER

PERFORMANCE COLLECTION

"I've always been fascinated by the power of juxtapositions to delight the eye and please the spirit.

With Shimmer, we've combined the humility and texture of thick, natural Belgian linen with metallic threads that give the cloth strength, durability, and - most importantly - the always surprising glimmer of sun on sand and sea."

- Katie Leede

74% linen / 20% Nylon /
2% Polyacrylic / 4% Polyester
Width 60"
40.000 Cycles Martindale



SH-01 Moongold

This product is a hardy, Belgian, blended linen and appropriate for upholstery and drapery.

*Katie Leede & Company is sold nationally to the trade through Holland & Sherry
and through other Showrooms internationally.*

For samples : samples@hollandandsherry.com / For more information : hello@katieleede.com

121 WEST 27TH STREET 703 NEW YORK CITY 10001 646-707-3569 www.katieleede.com