

# KATIE LEEDE & COMPANY



## IN THE ROUGH

“With In The Rough, I’ve sought to create super practical yet sophisticated fabrics - appropriate for kid and animal friendly spaces be they for a kitchen banquette or an outdoor lounge - that go long on texture and depth of color. Perfect for layering and not having to worry”

- Katie leede

---

---

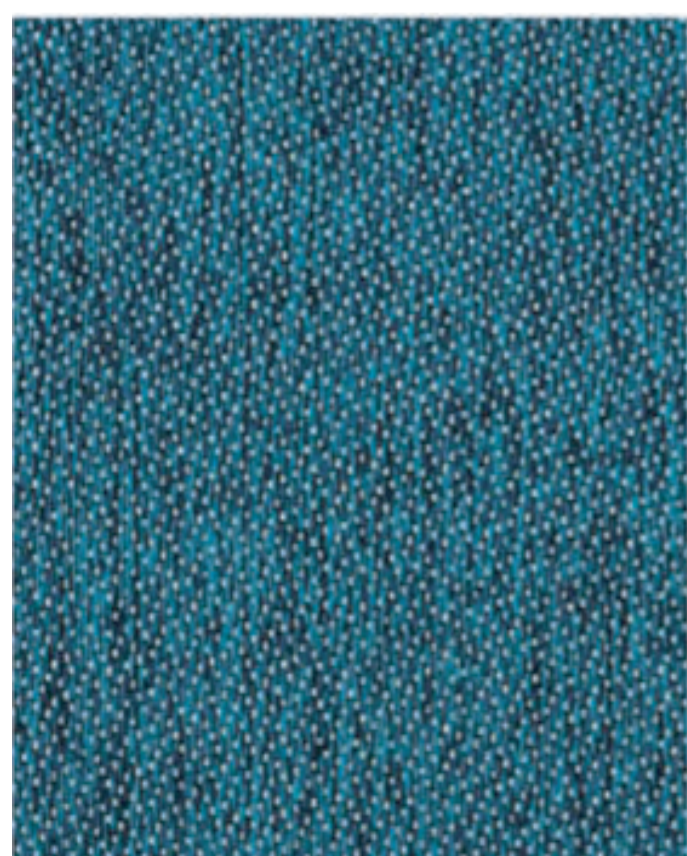
100% Outdoor Polypropylene  
Width 60”  
40.000 Cycles Martindale

---

---



IR-01 Salt



IR-02 Mer



IR-03 Brushfire



IR-04 Char



IR-05 Carbon