

KATIE LEEDE & COMPANY



AMUN BORDER

Katie has always found inspiration in the pages of the latest fashion pages. For creative fodder for Amun Border, Katie looked to Fashion circa 1160 B.C, and to the paintings of foreign captives (Syrian, Bedouin, Hitite, and Libyan) dressed in their ethnic robes as depicted in the funerary temple of Ramses III at Medinet Habu. The 4.5" border of this striking design makes for a perfectly proportioned detail on the base of chairs or sofas, as a leading edge on a curtain or as a custom pillow detail, especially when the border is mitered at the corners. Amun Border is hand-printed on 100% Belgian linen and is available in three lovely colourways: Root, Charcoal, and Juniper.

100% Linen

Width 52"

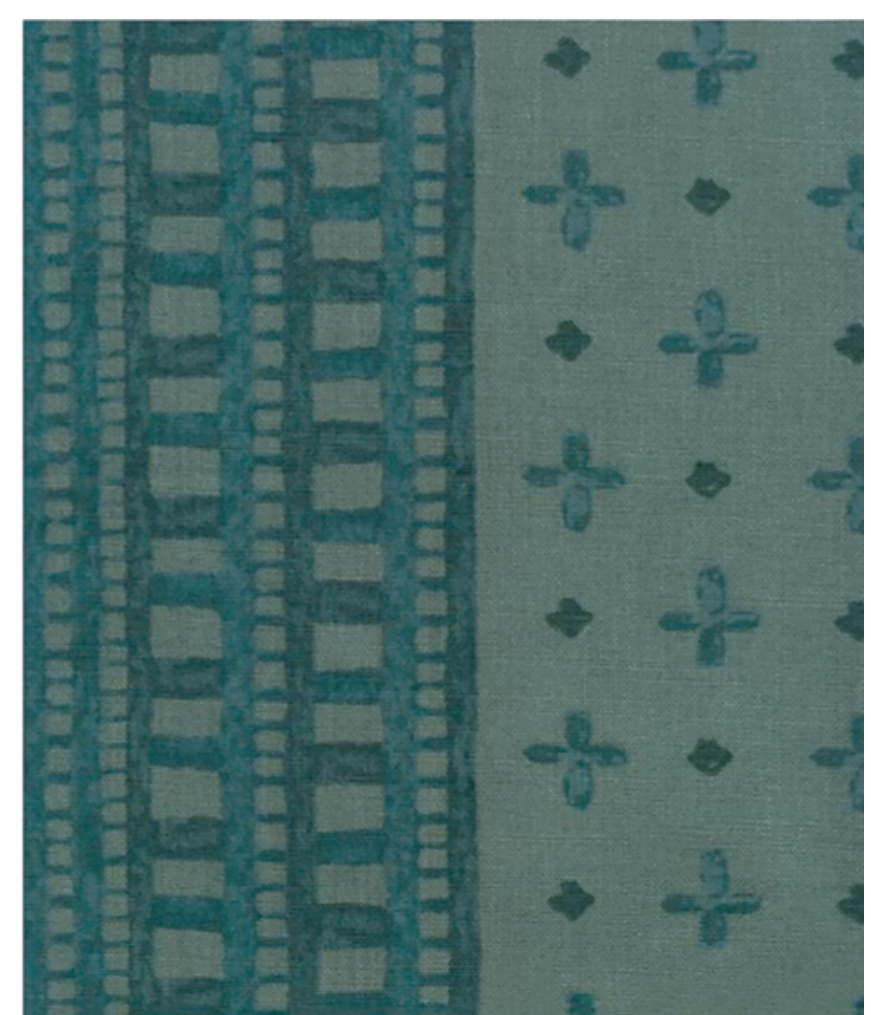
Repeat: 50.9" H x 12" V



AMB-01 Root



AMB-02 Charcoal



AMB-03 Juniper