

KATIE LEEDE & COMPANY



TULIPA

Tulipa takes its inspiration from an image of a tantalizing tulip motif Katie saw appliquéd on the royal robe of Sultan Suleyman II (d.1691) at the Topkapi Palace Museum in Istanbul. Fascinatingly, it was Ogier Ghiselin de Busbecq, the ambassador of Ferdinand I, Holy Roman Emperor to the Sultan of Turkey, who sent the first tulip seeds to Vienna in 1554 from the Ottoman Empire. From there the European craze for the rare and flamboyantly colored tulip took off and hasn't stopped since. Tulipa is hand screened in upstate New York and is easily customizable.

Hand Screened Wallpaper

27" Wide

6.34" Vertical Repeat

13.5" Horizontal Repeat

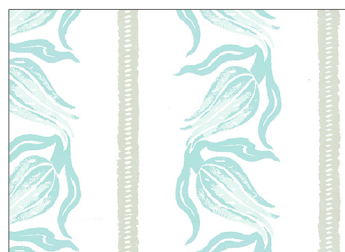
5 yard minimum

Shipped in single, double or triple rolls

Paper is wipeable not scrubable



TLI2-01 Platinum Putty



TLI2-02 Gossamer



TLI2-03 Sundried



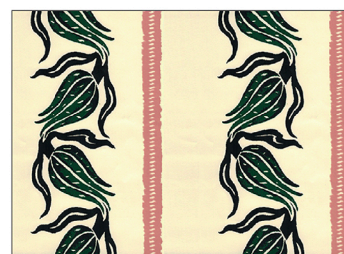
TLI2-04 Indigo Fig



TLI2-05 Pretty Pearl



TLI2-06 Pagoda



TLI2-07 Guava Forest

Contact us at hello@katieleede.com to inquire about our custom capabilities for this design.

121 WEST 27TH STREET 703 NEW YORK CITY 10001 646-707-3569 www.katieleede.com