

KATIE LEEDE & COMPANY



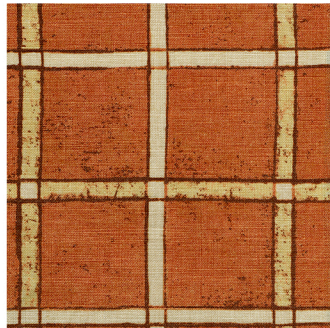
PTAH

On the west bank of Thebes, the unusual, checked pattern of Ptaḥ graces the painted plaster tomb walls of the sculptors Ipuky and Nebamun (c.1355 B.C.). When translating this existing pattern into fabric, Katie -in her desire to embrace "the beauty found in imperfection"-chose to retain the distressed look of the weathered walls with their chipped and pockmarked surface. Ptaḥ works extremely well on large scale upholstery pieces because of its bold, masculine scale. Ptaḥ coordinates beautifully with other, more figurative prints in the collection, is printed in Switzerland on 100% Belgian linen, and is available in four timeless colourways: Dune, Tumeric, Iguana, and Gullet.

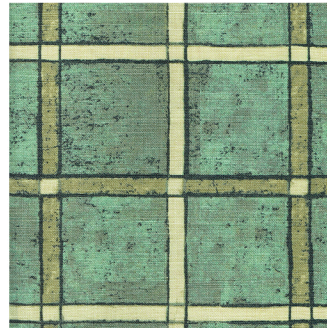
100% Linen
Width 52"
Repeat: 13.3"H x 12.6"W



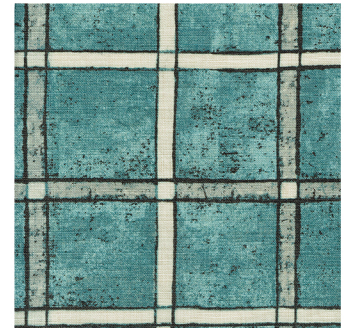
PT-01 Dune



PT- 02 Tumeric



PT-03 Iguana



PA-04 Gullet

Contact us at hello@katieleede.com to inquire about our custom capabilities for this design.

121 WEST 27TH STREET 703 NEW YORK CITY 10001 646-707-3569 www.katieleede.com