

KATIE LEEDE & COMPANY



PTAH

On the west bank of Thebes, the unusual, checked pattern of Ptah graces the painted plaster tomb walls of the sculptors Ipuky and Nebamun (c.1355 B.C.). When translating this existing pattern into fabric, Katie -in her desire to embrace "the beauty found in imperfection" -chose to retain the distressed look of the weathered walls with their chipped and pockmarked surface. Ptah works extremely well on large scale upholstery pieces because of its bold, masculine scale. Ptah coordinates beautifully with other, more figurative prints in the collection, is printed in Switzerland on 100% Belgian linen, and is available in four timeless colourways: Dune, Tumeric, Iguana, and Gullet.

100% Linen

Width 52"

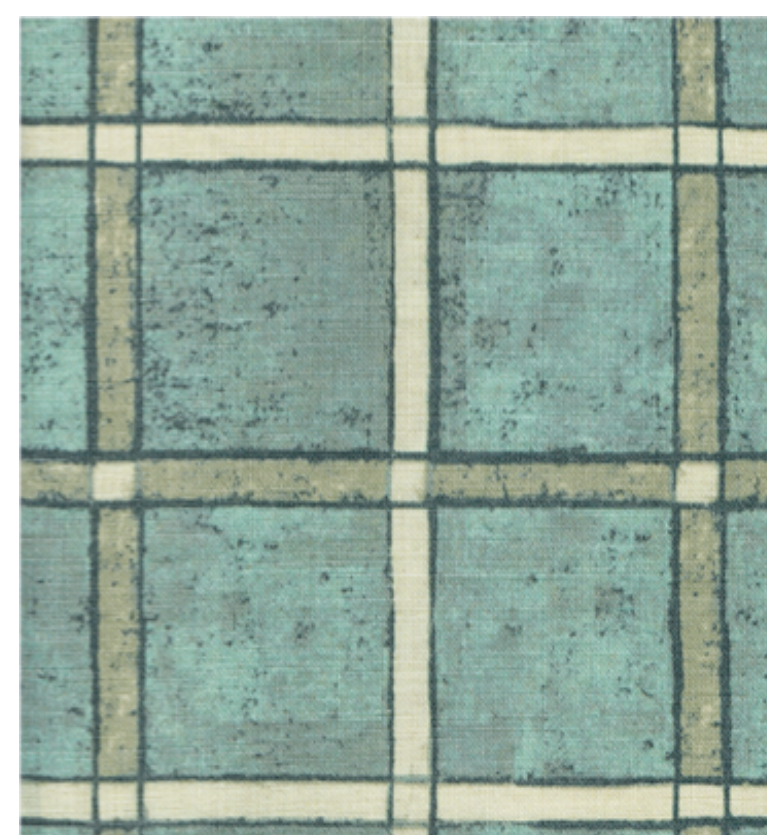
Repeat: 13.3" H x 12.6" V



PT-01 Dune *



PT-02 Tumeric *



PT-03 Iguana



PT-04 Gullet*

*Limited Stock Available