

KATIE LEEDE & COMPANY



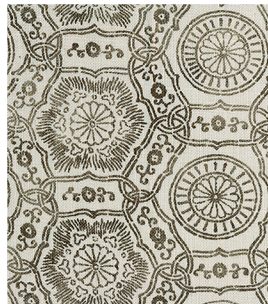
KIMONO POSITIVE

Kimono was inspired by a roll of vintage indigo-dyed kimono cloth Katie discovered while poking about a dusty antique shop in Kyoto. The original design used a resist dye technique called Katazome in which a paste of rice flour and bran is applied to cloth through cut paper stencil before the cloth is then dipped into a vat of dye. When formalizing this pattern into a larger repeat, Katie deliberately chose not to overcorrect the wobbly lines that show the original artist's hand at work. It is "the human touch" that gives this otherwise straightforward design soul and added interest. Kimono is printed on 100% Belgian linen in Switzerland and is available in the following nine Oriental colourways: Indigo, Fig, Sesame, Ginkgo, Black Pine, Cayenne, Fjord, Citrine and Chard.

100% Linen
Width 54.5"
Repeat 21.3" H x 12.3" V



KP-01 Indigo



KP-02 Fig



KP-03 Sesame



KP-04 Ginkgo



KP-05 Black Pine



KP-06 Cayenne



KP-07 Fjord



KP-08 Citrine



KP-09 Chard

Contact us at hello@katieleede.com to inquire about our custom capabilities for this design.

121 WEST 27TH STREET 703 NEW YORK CITY 10001 646-707-3569 www.katieleede.com