

KATIE LEEDE & COMPANY



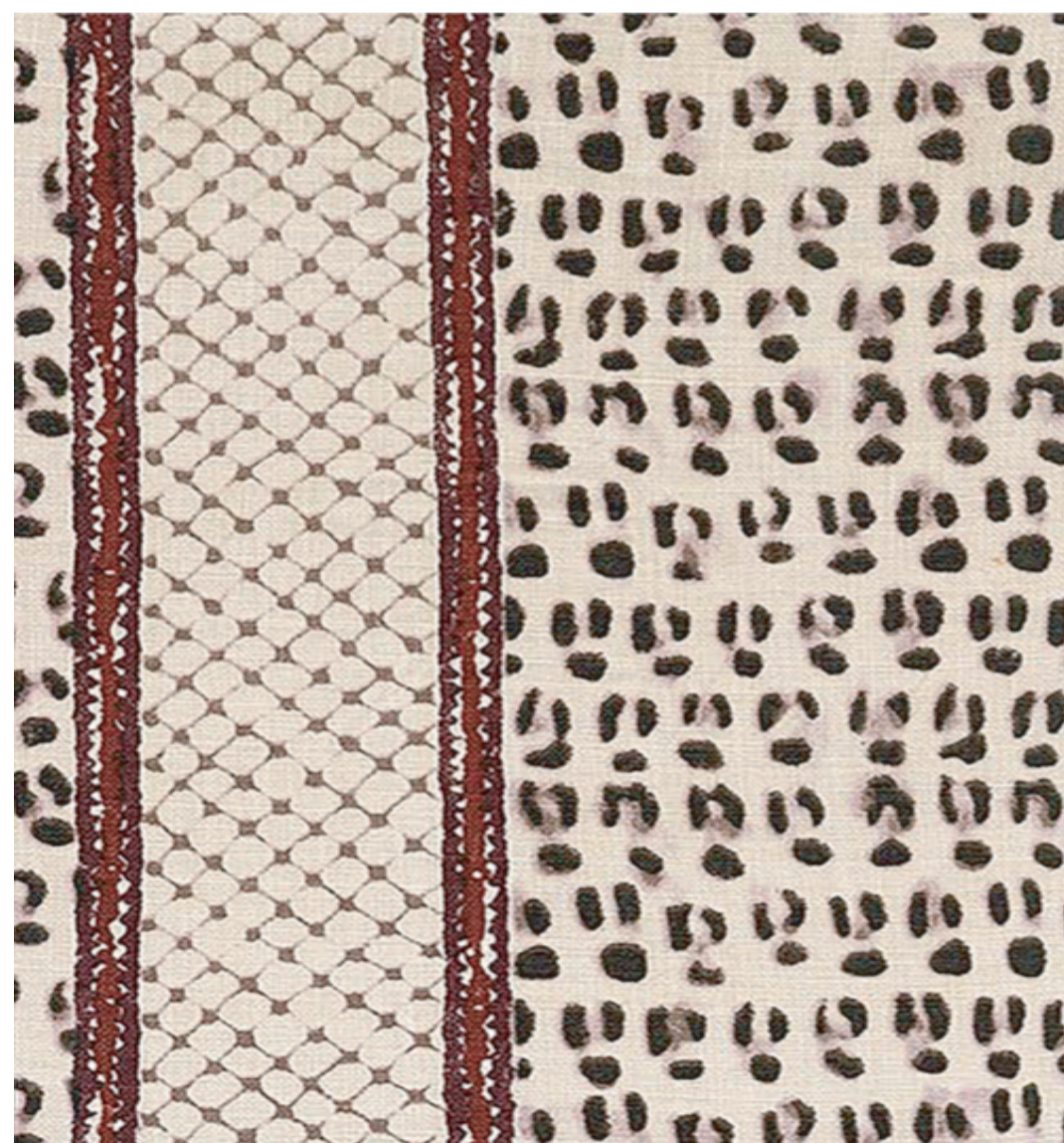
HATHOR

While foraging through out-of-print books on ancient Egyptian art for inspiration, Katie landed on an image of a tiny 6th Dynasty (2250 B.C.) statuette of a servant boy with a spotted pelt slung over his back. A lucky find ripe for reinterpretation into this bold, luxurious "Cheetah" stripe. We are told that a celebrated designer recently used this pattern on both the walls and ceiling of a client's dressing room to great effect. We'd like an invitation to see that, please! Hathor is printed on 100% Belgian linen and is available in Cinnabar and Grasses.

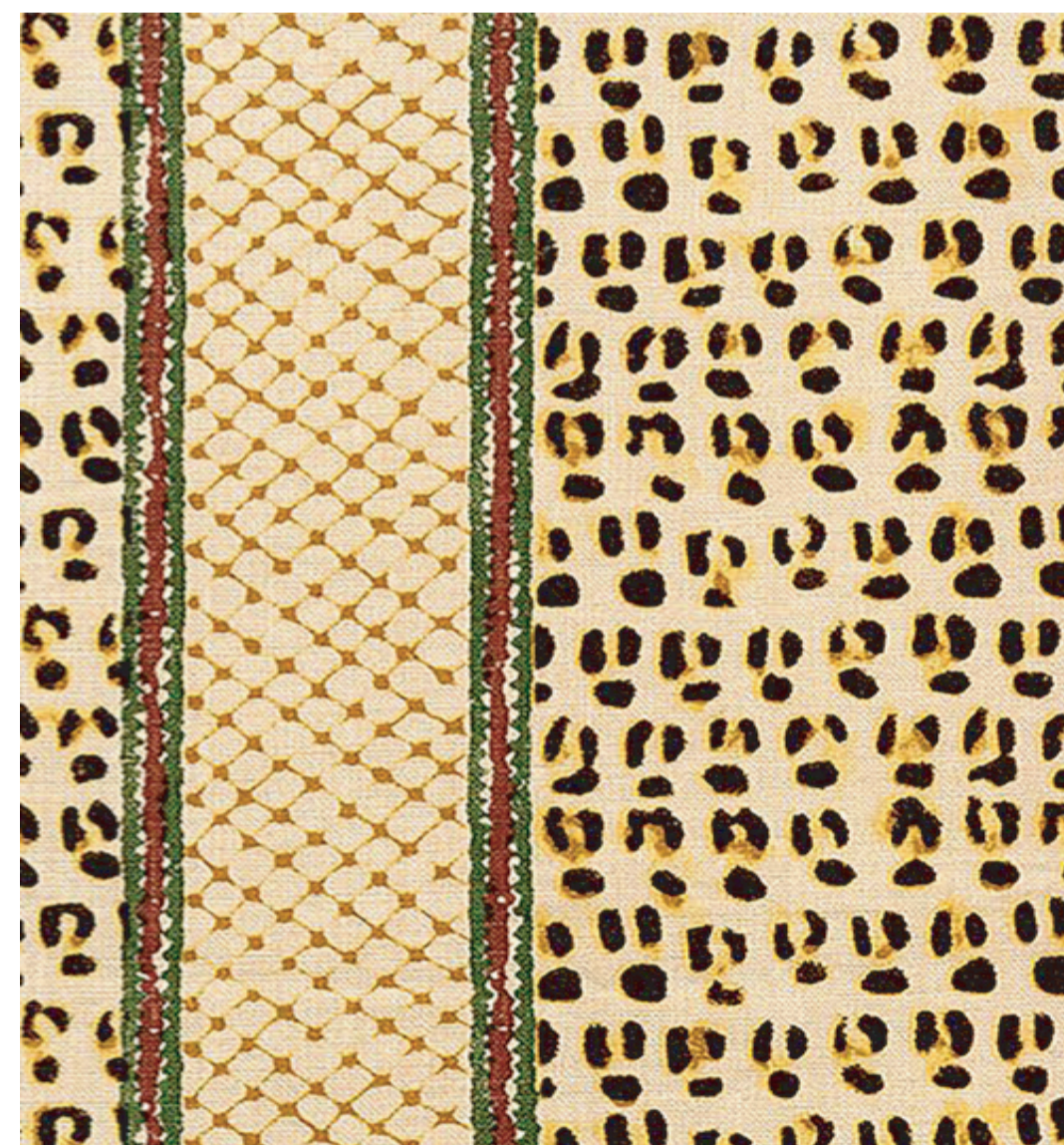
100% Linen

Width 52"

Repeat: 10" H x 9.7" V



HATH-01 Cinnabar



HATH-02 Grasses